

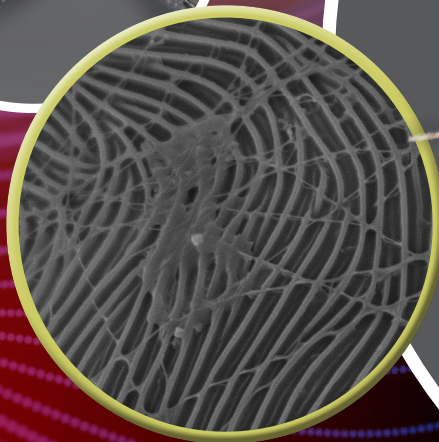
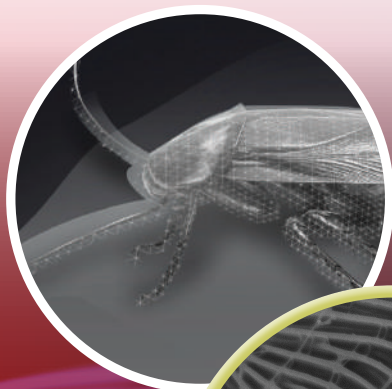
PROVECTA®

ADJUVANT

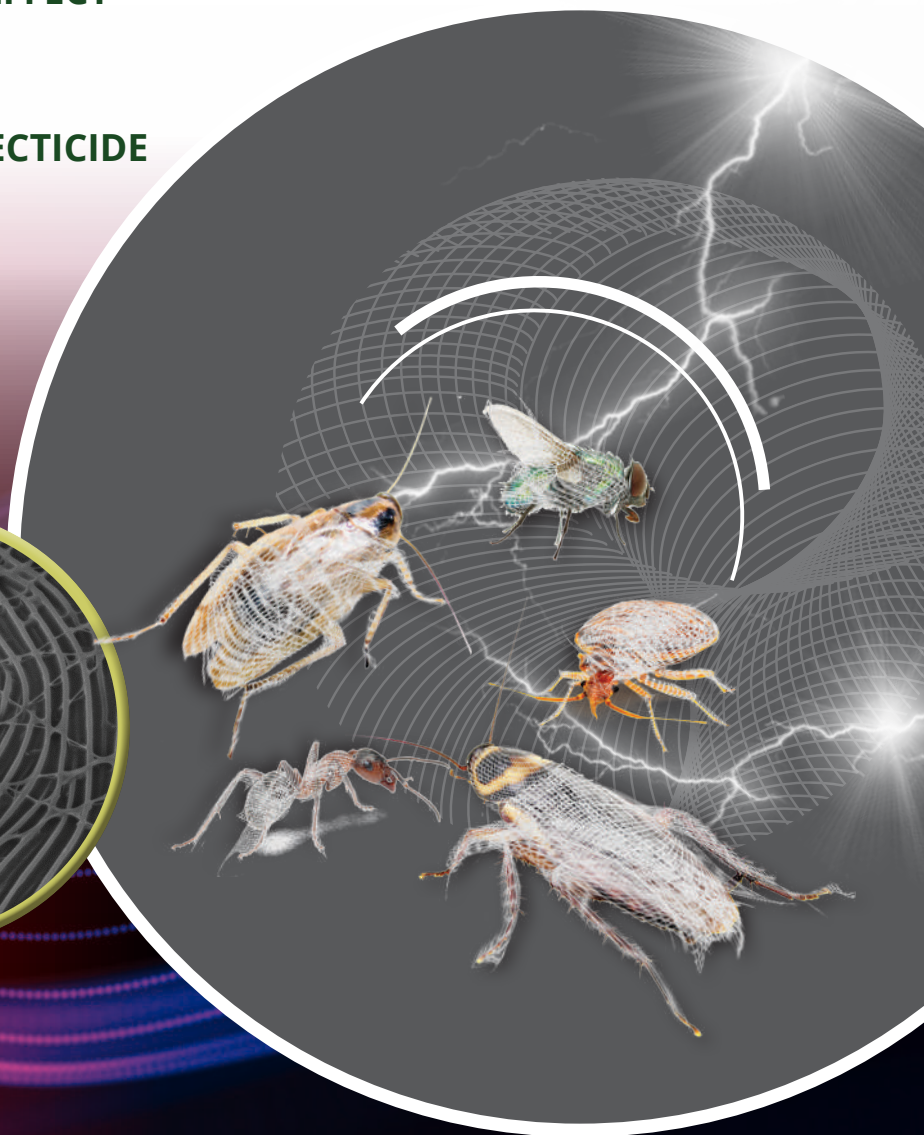
ENHANCES THE PERFORMANCE OF INSECTICIDES

PROVECTA All in web technology creates a 3-D molecular structure which causes the quick immobilisation of insect pests

- ✓ IMMEDIATE, KNOCK-DOWN EFFECT
- ✓ IMPROVED KILL OF INSECTS & ARACHNIDS
- ✓ MIXES WITH ALL LIQUID INSECTICIDE FORMULATIONS



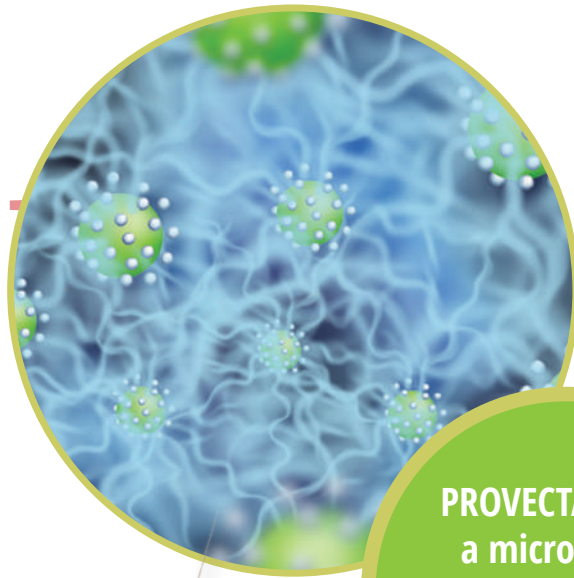
**FASTER
KNOCK-DOWN
WITH EXCLUSIVE
3D WEB
FORMULATION**



ENSYSTEX®
LEADING INNOVATION IN PEST MANAGEMENT

PROVECTA BENEFITS

- ✓ Allows for lower dose rates of insecticides
- ✓ Which means lower residues left behind
- ✓ Spray penetrates into the hard to reach areas
- ✓ Tank-mixed with synthetic insecticides to improve their performance
- ✓ Overcomes insecticide resistance
- ✓ Provides an immediate (knock-down) effect
- ✓ Not an insecticide - Does not require registration with Philippines FDA



PROVECTA under a microscope. Showing the tangled 3-D web of the formulation.

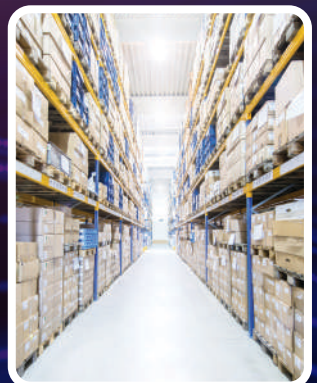


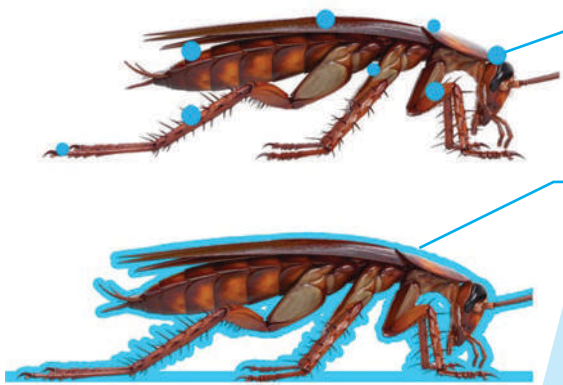
PROVECTA has no residual effects. This means it has no environmental persistence and is biodegradable.

FOR USE IN RESIDENTIAL, COMMERCIAL & INDUSTRIAL AREAS, INCLUDING HOSPITALS, KITCHENS & WAREHOUSES.



PROVECTA has a high safety profile and a low impact since it contains no neurotoxic insecticidal compounds like traditional insecticides. It works by a physical mode of action only. Moreover, it's innovative formulation ensures faster and more effective elimination of a wide range of insect pest species.





After coming into contact with the insect, PROVECTA's powerful web technology activates to rapidly spread evenly around the pest.

This physical mode of action quickly immobilises the insect.

LOOKING AT PROVECTA WEB TECHNOLOGY UNDER THE MICROSCOPE



The molecular 3D-network structure of the PROVECTA web, as seen under a microscope, is complex and very strong, ensuring that the insect is immobilised.



**100%
KILL
RATE**



AN INNOVATIVE APPROACH

PROVECTA employs a unique formulation whereby the solution creates a tangled three-dimensional web around the insects when they are sprayed. This is rather like having a net-casting spider in your spray tank.

Net-casting spiders throw their webs over their prey, entangling them in the web. PROVECTA achieves this effect by polymerising when it contacts the insects, to form a tangled, three-dimensional polymeric web, which encases the insects and greatly restricts their mobility.

This three-dimensional web action approach, ensures the insects never recover. They are gone for good.





The technology employed in PROVECTA has been optimised for urban environments to ensure the effective elimination of urban pest species. The technology is intended for the use in residential, commercial, and industrial areas, including hospitals, kitchens, and warehouses. It does not stain, which is one of the key aspects in the control of urban pests, such as bed bugs, fleas, cockroaches, stored product moths, etc.

The sprayable micro-mesh immobilises insects,
working like a spiders web to encase
and immobilise the insects...



ACTIVE ADHESION AND SPREADING

PROVECTA is super-powerful wetting agent that rapidly spreads over the insect exoskeleton to encase the insect. The polymerisation that occurs around the insect's exoskeleton restricts their movement and rapidly immobilises the insects leading to their death, just as if they were caught in a sticky trap.



BREAKING THE RESISTANCE CYCLE

Due to its novel mode of action, PROVECTA will control insects that are resistant to synthetic insecticides. It can also be tank-mixed with traditional residual insecticides to improve their performance and speed of kill.



Imported and distributed in the Philippines by:
Ensystex Philippines Inc.
330, Calvo Building
226 Escolta Street
Manila

Manufactured by:
ICB Pharma
6a, Moździerzowców Street, 43-603 Jaworzno,
Poland

BROEN1002 1.01 04.23

® Registered trademark of ICB Pharma used under licence by Ensystex Philippines Inc.